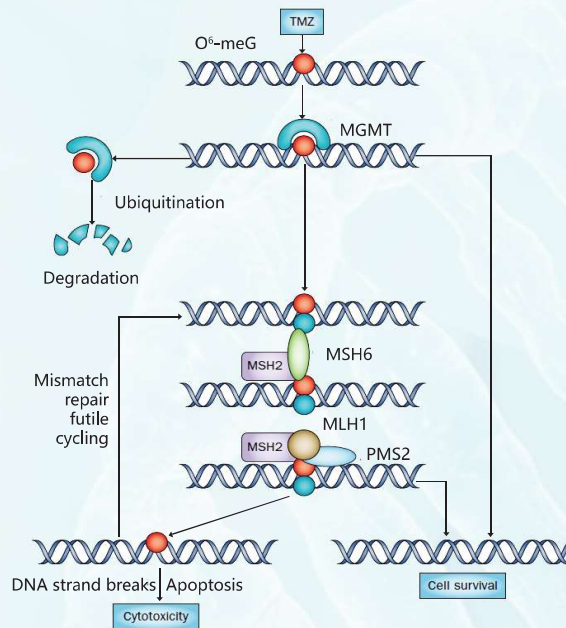


# MGMT Gene Methylation Detection Kit (Real-Time PCR assay)

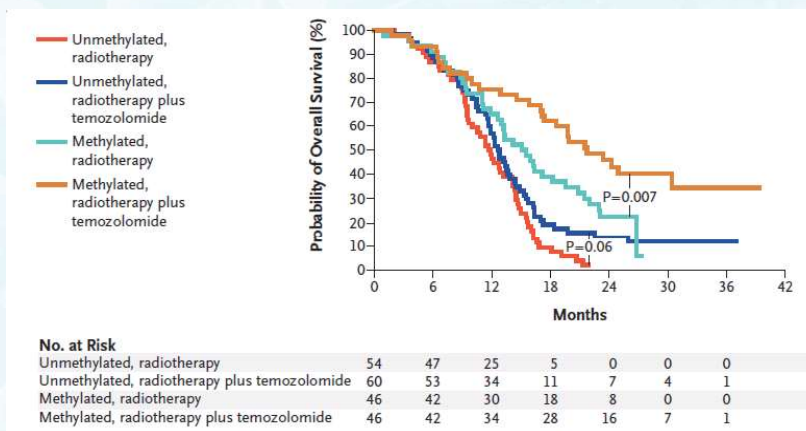
## CHEMOTHERAPY AND PERSONALIZED TREATMENT

O6-Methylguanine DNA-Methyltransferase (MGMT) is a highly efficient DNA repair enzyme that can repair the damage to the tumor cell DNA caused by alkylating drugs in chemotherapy. A certain level of MGMT activity in cells may lead to drug resistance.

MGMT's repair of alkylating agent damage makes it play a dual role in tumor chemotherapy: on the one hand, it protects normal tissues from alkylating agent damage and secondary cancer. On the other hand, it causes the resistance of tumor tissue to alkylating agent chemotherapeutics.



DNA methylation is closely related to the occurrence and development of glioma. The “Guidelines for Detection Technology of Tumor Individualized Therapy” states that patients with methylation of the MGMT gene will be benefit from Temozolomide treatment.





## PRODUCT INFORMATION

Product Name	Core Technology	Pack Size	Instruments Validated	Sample Type
MGMT Gene Methylation Detection Kit	PAP-ARMS®	24 Tests/Kit	Stratagene Mx3000P™ ABI7500 etc.	Tumor tissue



## DETECTION SIGNIFICANCE

- » MGMT methylation indicates patients will be sensitive to temozolomide chemotherapy, which is helpful for clinical selection of suitable treatments.
- » MGMT methylation may suggest a better prognosis.



## APPLICABLE PEOPLE

- » WHO grade III-IV glioma patients before chemotherapy treatment.



## FEATURES & ADVANTAGES

**Accuracy and Reliability:** Use pre-load PCR tube to effectively avoid cross-contamination.

**High Sensitivity:** Sensitivity can detect as low as 1% gene methylation status.

**Ease of Use:** Based on technology PAP-ARMS®, one step detection in 90 mins.

**Great versatility:** Validated on the most common qPCR machines with stable results.

## DETECTION PROCESS



Nucleic Acid Extraction



Modification



Set up qPCR



Amplification



Data Analysis

Tel : +86-592-7578317

Email: spacegen@spacegen.com

www.spacegen.com

XIAMEN SPACEGEN CO.,LTD

XIAMEN SPACESEQ MEDLAB CO.,LTD

Address: NO.2041,XizhouRoad,Xike Town, Tong'an District,Xiamen City, Fujian Province, China

SUZHOU SPACESEQ MEDLAB CO.,LTD

4th Floor, Building 1, No. 777 Kangyuan Road, Chengyang Street, Suzhou City 213000

